

WHITE DRUCE & BROWN

PROPERTY CONSULTANTS

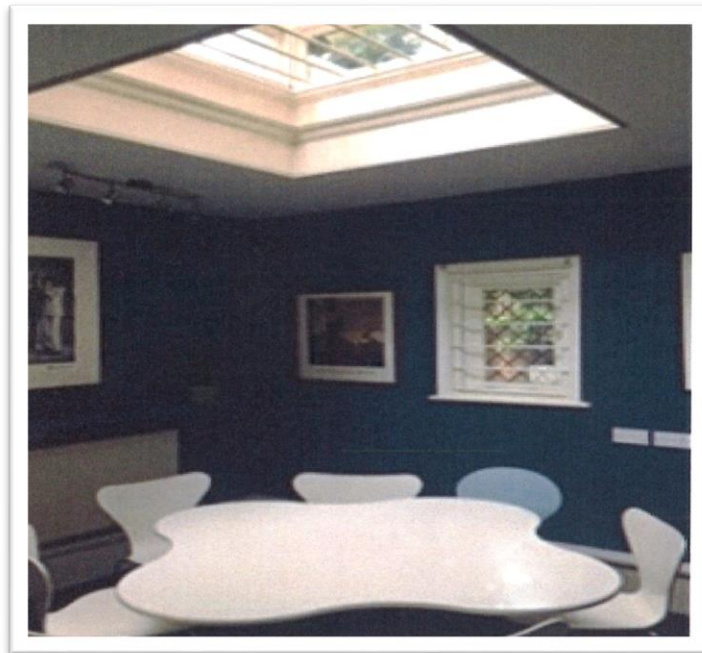
Elliott House, 28a Devonshire Street, London W1G 6PS

PRELIMINARY DETAILS

**SELF-CONTAINED OFFICE SUITE
IN ICONIC REGENT'S PARK BUILDING**

IDEAL FOR MEDIA ORIENTED COMPANY

535 SQ.FT.



Accommodation:

Own front door leading to three private offices and a large office/boardroom with some storage/private WC's.

Rent:

£45.00 p.s.f. (£23,940 p.a.x.)

Rates:

£15.00 p.s.f. (£8,025 p.a.)

Service Charge:

£3.00 p.s.f. approx.

Lease:

For a flexible term to be agreed.

Please contact **Jonathan Green** for further information.

www.whitedrucebrown.com

020 7467 5997

Fax 020 7224 5212